

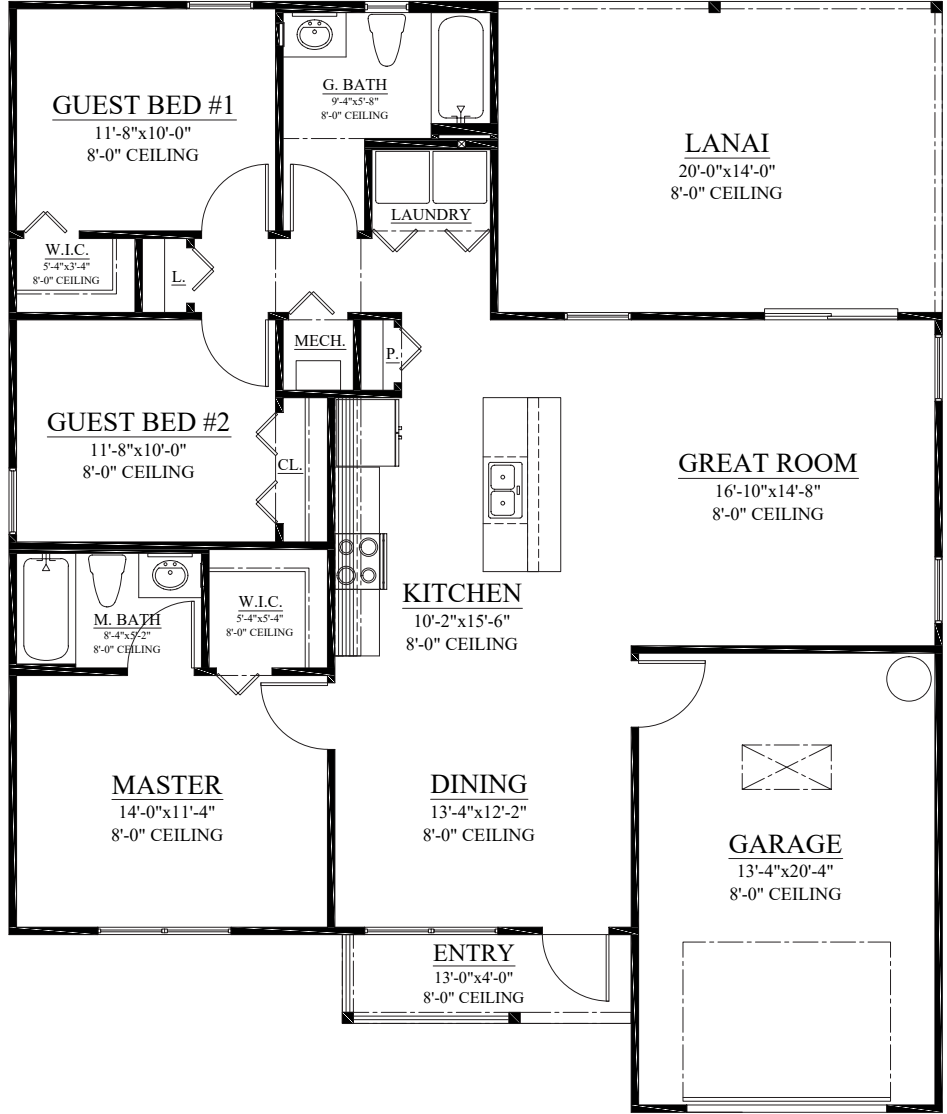


Sugar Palm 1

3 bedroom/2 bathroom



*Pictured is a right hand model. Finished product may be flipped or may vary from that shown.



About this home:

- Energy Star Rated
- Whirlpool Appliances
- Central A/C
- Vinyl Tile and Carpeting Options
- Include Storm Shutters
- Covered Front and Rear Porches
- 1-Year Home Warranty
- Ceiling Fans in Great Room and Bedrooms

Area Calculations	
Area	SQ. FT.
Living	1,311 SF
Entry	52 SF
Garage	285 SF
Lanai	280 SF
Total Area	1,928 SF



Sugar Palm 2

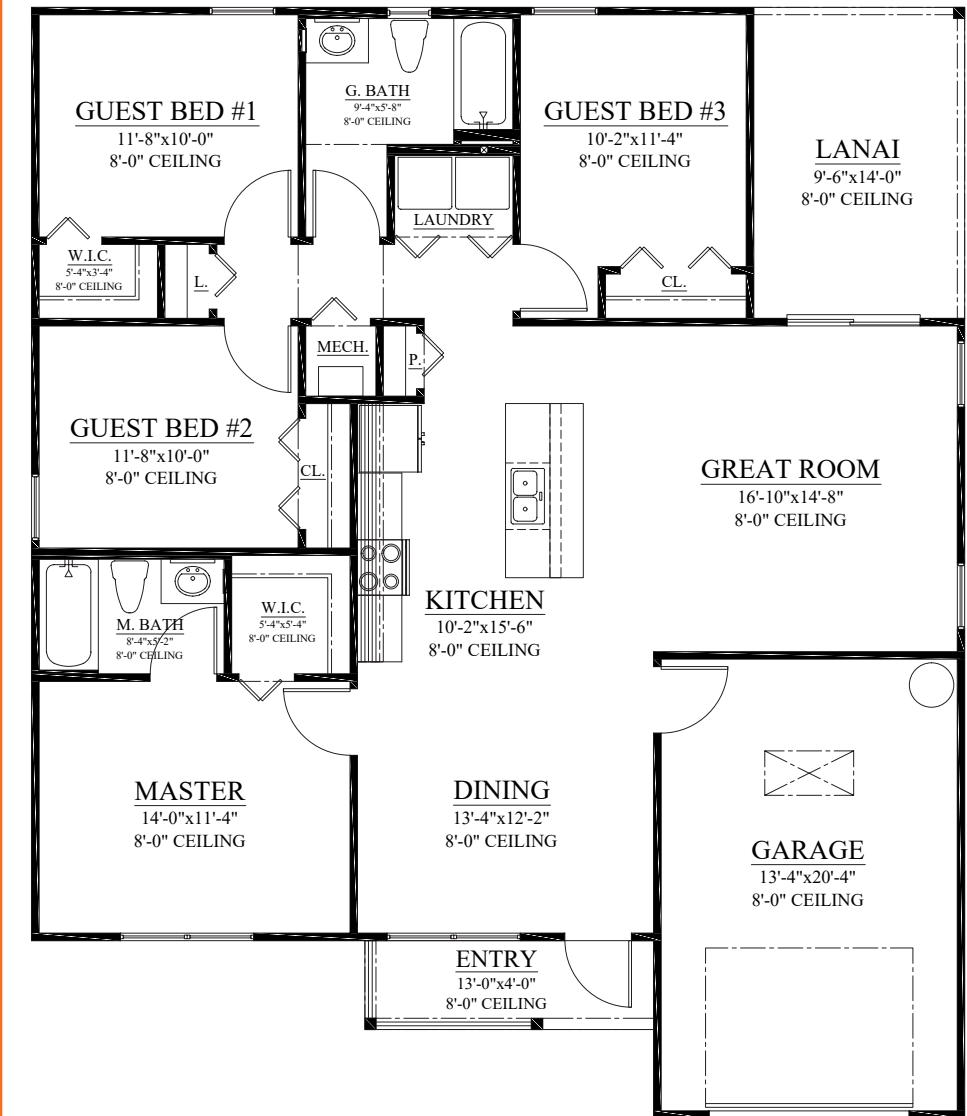
4 bedroom/2 bathroom



*Pictured is a right hand model. Finished product may be flipped or may vary from that shown.

About this home:

- Energy Star Rated
- Whirlpool Appliances
- Central A/C
- Vinyl Tile and Carpeting Options
- Include Storm Shutters
- Covered Front and Rear Porches
- 1-Year Home Warranty
- Ceiling Fans in Great Room and Bedrooms



Area Calculations

Area	SQ. FT.
Living	1,458 SF
Entry	52 SF
Garage	285 SF
Lanai	133 SF
Total Area	1,928 SF